

Contact:
Jackie Cruz
973-622-1188

BOARD OF TRUSTEES

Chair
Paul Belfanti*
Pearson Education

Treasurer
Ian Fuller
Genesis Asset Management

Secretary
Leslie R. Peters
City of Newark

Imran Chowdury
Deloitte Consulting LLP

Milagros Collazo
YWCA of Central New Jersey

Larry Dell*

Benjamin J. Dineen
United Way of Hudson County

Nunzio Gaetano Esposito
Tritonic

Ann C. Hartnett
Bloomberg L.P.

Eve A. Levy
The Hunter College Foundation

Vinayak Viswanathan
Deloitte Consulting LLP

Joseph A. Waks, Esq.*
City of Bayonne

Michael Wyetzner*
Michielli + Wyetzner Architects

*Artists



NEW JERSEY
STATE
COUNCIL
ON THE
ARTS

*Citations of
Excellence:
1998-2000
2001-2003
2007-2009*

FOR IMMEDIATE RELEASE:

ARTREACH XXI + Newark New Media Reception and Exhibition

ArtReach XXI opens on Thursday, June 13, 2013 6-8pm with a free public reception at City Without Walls (cWOW), 6 Crawford Street, Newark, NJ 07102. The exhibition is free and open to the public Wednesday – Saturdays 12-6pm through July 27, 2013.

ArtReach, cWOW's unique, award-winning educational program, pairs teenagers with professional artists in a semester-long after-school mentorship, giving them in depth exposure to a variety of professional experiences in creative careers, including the opportunity to exhibit in a professional gallery. This year's lecturers include: Christa Clarke Ph.D, Curator, Arts of Africa at the Newark Museum and Gary Garrido Schneider, Director of Education, at the Montclair Art Museum. In addition to Newark New Media screenings in the New Media Project Room, the main gallery features drawings, photography, painting, sculpture, installations and videos by the following fifteen pairs of students and mentors:

- Sarina Aquino (Arts High School) + Adrienne Wheeler (Newark, NJ)
 - Estephany Balbuena (Arts High School) + Colleen Gutwein (Montclair, NJ)
 - Victor Batista (East Side High School) + Akintola Hanif (Newark, NJ)
 - Christian Bonilla (Arts High School) + Ryan Pompey (Newark, NJ)
 - Iricelly Caban (University High) + Lisa Conrad (Newark, NJ)
 - Angel Cruz (St Benedicts) + James Wilson (Newark, NJ)
 - Marcellis Counts (University High School) + Daniel Brophy (Newark, NJ)
 - Na-Samad Debreaux (Weequahic High School) + Derek Franklin (East Orange, NJ)
 - Asha Williams (West Side High) + Aeishah Abdul-Raheem (Piscataway, NJ)
 - Destiny Thomas (University High) + Jennifer Watson (Long Branch, NJ)
 - Nnamdi Nwaoguh (St. Benedicts Prep) + Malik Hardaway -Whitaker (Newark, NJ)
 - Talitha Patton (Westside High School) + Vikki Michalios (Jersey City, NJ)
 - Richard Paz (Belleville High) + James Blake (Newark, NJ)
 - Olijah Ray (Technology High School) + Steve Green (Newark, NJ)
 - Nadirah Walker (University High School) + Dominique Duroseau (Irvington, NJ)
- Gallery Interns:** Lucy Oreiro (East Side High) + Noah Marshall (Central High School) + Shareef Green (Central High School)

ArtReach and Newark New Media is funded in part by the U.S Housing & Urban Development Community Block Grant administered by the City of Newark, and Children's Hospital of NJ at Newark Beth Israel Medical Center.

Additional sponsors include: United Way of Essex and West Hudson, Newark ArtStart Project Grant and Jerry's Artist Outlet

See next pages for sample images and details →

ARTREACH XXII

Sample images and further details



L to R: ArtReach Mentor Daniel Brophy with Mentee Marcellis Counts <http://bit.ly/19u1J5t>



L to R: ArtReach Mentor Jennifer Watson with Mentee Destiny Thomas <http://bit.ly/138JgYy>



cWOW's ArtReach XXI participants, 2013 <http://bit.ly/17bEU7g>



L to r: ArtReach mentor Steve Green and Mentee Olijah Ray in Steve's Newark Studio. <http://bit.ly/10NTQkG>

DIRECTIONS TO cWOW. 6 Crawford Street, Newark, NJ is on the corner of Halsey and Crawford Streets, between Broad and Washington near Lincoln Park and Symphony Hall. **From the North on Broad St:** R on W. Kinney; L on Washington; L on Crawford. **From NJ Turnpike & 78 W:** Exit 14 to 78 W to Newark Airport / Route 21 N Exit; Broad St Exit; L at W. Kinney; L on Washington; L on Crawford. **From 78 E:** Exit 56 to Clinton Ave; R on Clinton; L on MLK; R on Crawford. **From Garden State Parkway:** Exit 140 to Rt. 22 East; to 21 North; L onto Broad St; L at W. Kinney; L on Washington; L on Crawford. **Mass Transit from NYC & Phila.:** PATH, NJ Transit or Amtrak to Newark Penn Station. Take taxi or bus #39 to Broad St. and W. Kinney; walk on W. Kinney to Halsey; L one block to Crawford. **Accessibility:** Entryway & bathroom are ADA accessible. Large-print text from cWOW publications is available on request. Verbal descriptions of artworks and touchable artworks are also available on request whenever possible.

Newark New Media 2013

Newark New Media artists in residents receive a major exhibition and collaborate with high-school apprentices from Newark Public Schools in a semester-long after school program that helps ready teenagers for 21st Century creative careers.

Newark New Media 2013 screening of works at cWOW's New Media Project room by: Manuel Acevedo & apprentices from Barringer High School Andrew Terehan & apprentices from East Side High School's New Media Studies Magnet Program Students and East Side Alumni Mentors

Program Students:

Dorsey Wood, Marlene Sequeira, Anabelle Mazagwu, Hugo Santos, Andre Marques, Carina Silva, Dave Barbosa

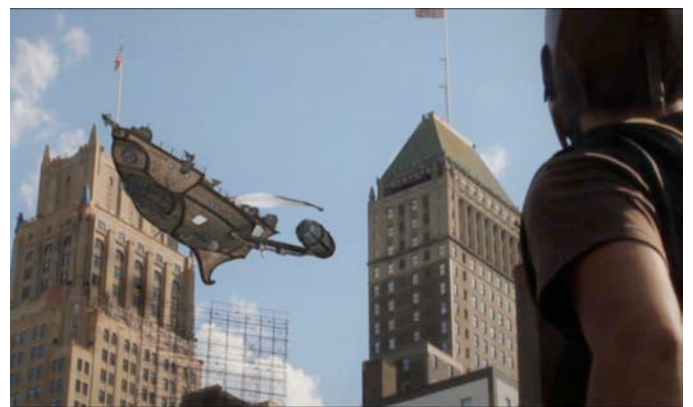
East Side Alumni Mentors:

Joao Tarouco – ECC New Media Technologies, Andre Zatta, Leonardo Gulli

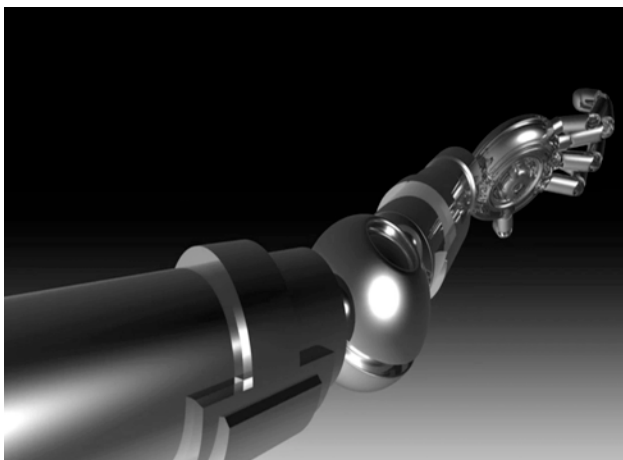
Newark New Media Sample images and further details



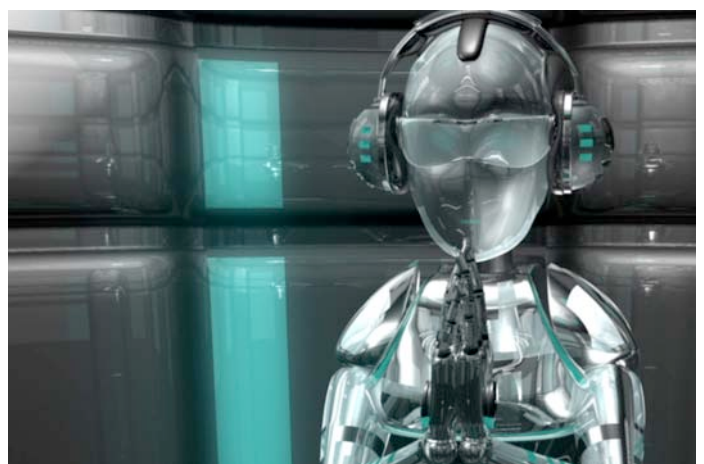
I Am... Manuel Acevedo and apprentices from Barringer High School
<http://bit.ly/ZjkKDi>



Arrowhead Over Newark, Andrew Teheran and apprentices from Eastside High School's New Media Studies Magnet Program
<http://bit.ly/12UqPW2>



Arm Andrew Teheran and apprentices from Eastside High School's New Media Studies Magnet Program
<http://bit.ly/11fTHWa>



Safety Bot Andrew Teheran and apprentices from Eastside High School's New Media Studies Magnet Program
<http://bit.ly/12rk7fg>